



Albuterol HFA Inhalers - Go Green & Keep It Clean

Albuterol inhalers have changed from CFC (chlorofluorocarbon) to HFA (hydrofluoroalkane). CFC and HFA help propel the albuterol into your lungs. HFA is more environmentally “friendly” and is replacing CFC worldwide. This change will not affect how well your albuterol medication works.

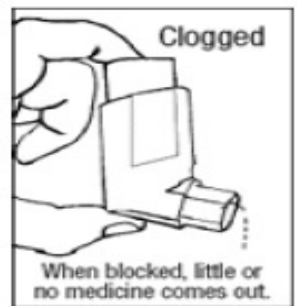
Things to Remember About HFA Inhalers:

1. HFA Inhalers Have a Softer Spray

The HFA inhaler has a softer, warmer spray and may taste different. While the spray may not feel as strong, the medicine works just as well as your old inhaler.

2. Clean Regularly; Prime with First Time and Occasional Use

- It’s important to wash the inhaler mouthpiece at least once a week to prevent clogging.
- The first time you use your HFA inhaler, you will need to prime it. You will need to re-prime it if it has been more than two weeks since you last used it. Priming and cleaning instructions are provided on the back side.



3. Keep Track of Your Puffs

Keep track of your puffs so you don’t run out of your rescue medicine. Count the number of puffs you use, including the puffs used to prime your albuterol inhaler (e.g., use a notebook, calendar, or dose counting card [see on back side]). When you reach 200 puffs, start using a new inhaler. Most inhalers will still deliver puffs even after the medicine is gone, so it’s better to rely on a puff count.

If you find that you’re using your albuterol more than two days a week (except before exercise), talk with your doctor about adjusting your medication. When your asthma is in good control, you’ll feel better and get more out of life. For more information about how to manage your asthma, visit kp.org/asthma.

Priming and Cleaning Instructions

CLEANING YOUR INHALER:

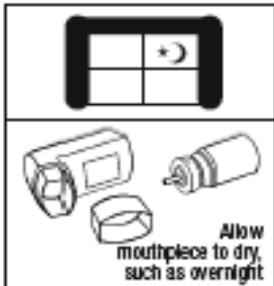
Keeping the plastic mouthpiece on your albuterol HFA inhaler clean is important to prevent clogging and medication build-up. The inhaler may stop working if not cleaned regularly.

Wash the inhaler mouthpiece **at least once a week** or any time it appears clogged.



To clean your inhaler:

- 1) Remove both the canister and mouthpiece cap.
- 2) Wash the mouthpiece under warm running water for 30 seconds, running water through both the top and bottom of the mouthpiece. Never immerse the canister in water.
- 3) Dry the mouthpiece by shaking off excess water and letting it air dry thoroughly, such as overnight. Clogging is less likely to occur if the mouthpiece dries completely.
- 4) When the mouthpiece is dry, replace the canister and the mouthpiece cap.



PRIMING INSTRUCTIONS for FIRST TIME and OCCASIONAL USE:

You will need to prime your inhaler before using it for the first time. To prime the inhaler:

- 1) Shake the inhaler well.
- 2) Remove the mouthpiece cap. Spray 3 times into the air, away from your face.

You must re-prime your inhaler if it's been more than 2 weeks since you last used it.

Tip: If you need to use your inhaler before the mouthpiece is completely dry, shake off the excess water, replace the canister, and spray twice into the air, away from your face. This should remove most of the remaining water inside the mouthpiece. Take your dose as prescribed, then rewash and air dry thoroughly.

Dose Counting Card (make a check mark each time you use a puff):

1	2	3	4	5	6	7	8	9	10	11	12	13	14	15	16
17	18	19	20	21	22	23	24	25	26	27	28	29	30	31	32
33	34	35	36	37	38	39	40	41	42	43	44	45	46	47	48
49	50	51	52	53	54	55	56	57	58	59	60	61	62	63	64
65	66	67	68	69	70	71	72	73	74	75	76	77	78	79	80
81	82	83	84	85	86	87	88	89	90	91	92	93	94	95	96
97	98	99	100	101	102	103	104	105	106	107	108	109	110	111	112
113	114	115	116	117	118	119	120	121	122	123	124	125	126	127	128
129	130	131	132	133	134	135	136	137	138	139	140	141	142	143	144
145	146	147	148	149	150	151	152	153	154	155	156	157	158	159	160
161	162	163	164	165	166	167	168	169	170	171	172	173	174	175	176
177	178	179	180	181	182	183	184	185	186	187	188	189	190	191	192
193	194	195	196	197	198	199	200	201	202	203	204	205	206	207	208

1	2	3	4	5	6	7	8	9	10	11	12	13	14	15	16
17	18	19	20	21	22	23	24	25	26	27	28	29	30	31	32
33	34	35	36	37	38	39	40	41	42	43	44	45	46	47	48
49	50	51	52	53	54	55	56	57	58	59	60	61	62	63	64
65	66	67	68	69	70	71	72	73	74	75	76	77	78	79	80
81	82	83	84	85	86	87	88	89	90	91	92	93	94	95	96
97	98	99	100	101	102	103	104	105	106	107	108	109	110	111	112
113	114	115	116	117	118	119	120	121	122	123	124	125	126	127	128
129	130	131	132	133	134	135	136	137	138	139	140	141	142	143	144
145	146	147	148	149	150	151	152	153	154	155	156	157	158	159	160
161	162	163	164	165	166	167	168	169	170	171	172	173	174	175	176
177	178	179	180	181	182	183	184	185	186	187	188	189	190	191	192
193	194	195	196	197	198	199	200	201	202	203	204	205	206	207	208

